

PHYSIOTHERAPY

University courses - Victoria

MARCH 2024, CAREERS DEPARTMENT



Catholic College
Wodonga *Life in Jesus*



Introduction

This document has been developed to assist Year 10 - 12 students and their families in researching physiotherapy courses in Victoria. Please use entry requirements and indicative selection ranks listed in this document as a guide only and check university websites for up-to-date information.

Disclaimer: Information has been taken from university websites and the Victorian Tertiary Admissions Centre (VTAC) website. Universities featured in this guide reserve the right to change course information, admissions, and entry requirements at any time and without notice. Note: photos in this document are stock images and aren't representative of students at the universities.

Written by Sandie McKoy, March 2024
Career Development Leader, Catholic College Wodonga

What is the difference between physiotherapy and other musculoskeletal therapies such as chiropractic, osteopathy, and myotherapy?

All are healthcare professions that aim to improve physical function and reduce pain, but they each have their own unique approach and methods.

Physiotherapy

Physiotherapy involves assessing, diagnosing, and treating various physical conditions using a combination of exercises, manual therapy, and education. Physiotherapists work with their patients to restore movement, reduce pain, and improve overall physical function.

Chiropractic

Chiropractic focuses on the relationship between the spine and the nervous system, and how misalignments in the spine can cause a range of health issues. Chiropractors use manipulation or adjustments to realign the spine, reduce pain, and improve mobility.

Osteopathy

Osteopathy takes a holistic approach to healthcare, considering the entire body as an interconnected system. Osteopaths use manual techniques to restore balance and improve function throughout the body, with a focus on the musculoskeletal system.

Myotherapy

Myotherapy is a type of physical therapy that involves the assessment, treatment, and management of musculoskeletal pain and dysfunction. Myotherapists use various techniques such as massage, dry needling, and exercise therapy to reduce pain, improve mobility, and enhance overall physical function.

Information on physiotherapy

TELL ME ABOUT PHYSIOTHERAPY

ROLE OF A PHYSIOTHERAPIST

A physiotherapist assesses and treats a wide range of physical conditions affecting mobility, movement, and function. Their tasks include evaluating patients' physical abilities, designing and implementing treatment plans, providing education on injury prevention and rehabilitation, and promoting overall health and wellbeing through exercise and lifestyle modifications.

WHY PHYSIOTHERAPISTS ARE AMAZING

Physiotherapists are amazing because they help people recover from injury or illness, improve their physical abilities, and achieve their goals. They provide personalised care and support to help patients regain mobility and function, reduce pain, and improve their quality of life. Their expertise and dedication make a positive impact on countless individuals and communities.

THINGS TO CONSIDER

The downsides of being a physiotherapist may include long work hours, heavy workload, and physical demands on the body. Additionally, working with patients who may be in pain or have limited mobility can be emotionally challenging.

JOB PROSPECTS

Jobs are expected to grow very strongly. Future growth prediction - 28.7%,

<https://labourmarketinsights.gov.au/>

EXCELLENT WEBSITE

My Health Career, www.myhealthcareer.com.au

CAN I SPECIALISE?

Yes! Physiotherapists are expected to continuously undertake professional development to enhance their skills and competencies. There are 4 'milestones' of performance level. Each level acts as a guide of where the physiotherapist is up to in their career progression.

The highest level of performance is Milestone 4 (expert). Performance at this level is expected of a physiotherapist who has completed Fellowship by Specialisation of the Australian College of Physiotherapists.

To gain Fellowship, the physiotherapist will complete a two year 'Specialist Training Program' in one of the following areas:

Cardiorespiratory

Gerontology

Musculoskeletal

Neurology

Occupational Health

Paediatric

Pain

Sports and Exercise

Women's, Men's, and Pelvic Health.

Read about the milestones via this [link](#).

Not ready for uni?

VET is an amazing way to start your physiotherapy journey. You can study a variety of courses related to supporting people through studying at a registered training organisation such as a TAFE or through a traineeship. Not only will you engage in industry experience, you'll be qualified to work in that industry while you study at uni.

While a VET course won't provide guaranteed entry into a Bachelor of Physiotherapy at a Victorian university, it can boost your chances of gaining entry, depending on the qualification level, if the course is 'graded', and your secondary school results. You can search for courses via the [Victorian Skills Gateway](#) and for traineeships via a job search site such as [seek.com](#).

The following are three entry level courses you could consider.

REMEDIAL MASSAGE

What are the courses?

Certificate IV in Massage Therapy and Diploma of Remedial Massage.

Why should I consider massage?

You will learn about anatomy and physiology, can work as a remedial massage therapist with the Diploma qualification, and prepare for the hands-on massage work of a physiotherapist.

ALLIED HEALTH

What is the course?

Certificate IV in Allied Health Assistance (Physiotherapy).

Why should I consider allied health assistance?

You will be qualified to work as a physiotherapy assistant and you will gain knowledge about the rehabilitation industry.

INDIVIDUAL SUPPORT

What is the course?

Certificate III in Individual Support.

Why should I consider studying this course?

You can specialise in either aged care or disability. Both specialisations will prepare you to work with elderly people and people with additional needs.

How to become a physiotherapist

This information is for courses in Victoria.

STEP 1: Secondary school studies

Study VCE subjects such as biology, Health and Human Development, Psychology, Physical Education, and Mathematics. Achieve a competitive ATAR.

STEP 2: complete an accredited physiotherapy degree

Complete an accredited undergraduate or graduate entry degree at one of the following universities:

La Trobe University
Charles Sturt University
Australian Catholic University
Federation University
Victoria University
Monash University
The University of Melbourne
Swinburne University

You will need to meet English language requirements, inherent requirements (e.g., communication skills), and academic entry requirements for course admission.

You will also be required to get or prove you have certain vaccinations and immunisations and get a Police Record Check and Working with Children Check.

STEP 3: Registration

Apply to register with the Physiotherapy Board of Australia (PBA) to practice as a physiotherapist. The PBA is overseen by the Australian Health Practitioner Regulation Agency (AHPRA).

STEP 4: Employment

Work as a physiotherapist.

STEP 5: Renew your registration each year

Renew your registration each year and ensure you meet the registration standards (i.e., continuing professional development hours).

STEP 6: improve your skills and competencies

Work your way through the [performance level milestones](#) relevant to your career goals.

What ATAR will I need?

When it comes to the ATAR, there are three ways you can gain direct entry into an undergraduate entry physiotherapy degree in Victoria – achieving a selection rank above the lowest rank for the relevant intake, achieving above the guaranteed ATAR, or receiving a place in the ACU Guarantee program.

SELECTION RANK

Universities use the 'selection rank' when assessing course applications.

The selection rank is your ATAR plus any adjustment factors taken into consideration by the university (e.g., equity and academic adjustments).

Adjustment factors are added to your combined study scores (VCE aggregate) and your ATAR is re-ranked.

Your selection rank will be different for each course at each university as each institute uses their own adjustment programs.

You won't know what your selection rank is, but you'll need to achieve a rank above the 'lowest selection rank' for the relevant intake year.

Learn about the selection rank and ATAR profiles via this [video](#).

GUARANTEED ATAR

The following universities have a 'guaranteed ATAR' program.

The guaranteed ATARs for physiotherapy listed below are relevant for the 2024 intake and may change for the 2025 intake.

La Trobe University
[Aspire Community Contribution Program](#)

Bendigo campus – 90
Melbourne campus – 94

[Regional Benefits Program*](#)
Bendigo campus – 85

Federation University
[Early Offer Program](#)
Gippsland Churchill campus – 90

Monash University
[Monash Guarantee program*](#)
Peninsula campus – 93

*Note – these programs are only available to eligible applicants.

NO ATAR

Australian Catholic University offers the Bachelor of Physiotherapy at the Ballarat campus.

They have an early entry program called '[ACU Guarantee](#)'. Successful applicants can receive a conditional 'ATAR free' offer for the course through this program.

The University calculates a selection rank using your Year 11 grades. The selection rank can be boosted through providing up to three personal statements.

The conditions of the early offer program are successfully completing Year 12, achieving course prerequisites, and ordering your VTAC preferences correctly.

Course Summary

These two pages list the physiotherapy courses you can apply for at Victorian universities.
The rest of the document will give information about the courses at each university.

LA (Lowest ATAR)

Lowest ATAR to receive entry into the course excluding any adjustment factors for the 2024 January intake (VTAC applicants).

LSR (Lowest Selection Rank)

Lowest selection rank inclusive of ATAR + adjustment factors to receive entry into the course for the 2024 January intake (VTAC applicants).

L/N

Not published - lowest ATAR for the 2024 January intake

PHYSIOTHERAPY – UNDERGRADUATE ENTRY

University	Course	Campus	Length (FT)	LA	LSR
Charles Sturt University	Bachelor of Physiotherapy	Albury-Wodonga	4-years		80.0
Australian Catholic University	Bachelor of Physiotherapy	Ballarat	4-years	86.95	91.00
La Trobe University	Bachelor of Physiotherapy (Honours)	Bendigo	4-years	89.05	93.55
	Bachelor of Physiotherapy (Honours)	Melbourne		93.10	96.00
	Bachelor of Physiotherapy (Honours) (Regional Entry)	Bendigo	4-years	80.45	90.40
	Bachelor of Physiotherapy (Honours) (First Nations Australian Entry)	Bendigo	4-years	LN	LN
Federation University	Bachelor of Physiotherapy	Gippsland	4-years	71.95	81.25
Victoria University	Bachelor of Applied Movement Sciences / Master of Physiotherapy	Footscray Park	4.5-years	92.45	97.55
Monash University	Bachelor of Physiotherapy (Honours)	Peninsular	4-years	91.55	97.15
The University of Melbourne	Bachelor of Science/Doctor of Physiotherapy	Parkville	6-years		98.05
	Bachelor of Biomedicine/Doctor of Physiotherapy	Parkville	6-years		98.00

PHYSIOTHERAPY – GRADUATE ENTRY

University	Course	Campus	Length (FT)
La Trobe University	Master of Physiotherapy Practice	Melbourne	2-years
Victoria University	Master of Physiotherapy	Footscray Park	2-years
Swinburne University	Master of Physiotherapy	Hawthorn	2-years
The University of Melbourne	Doctor of Physiotherapy	Parkville	3-years
Monash University	Doctor of Physiotherapy	Peninsular	3-years

CHARLES STURT UNIVERSITY



Passionate about physical health and wellbeing? Looking for a rewarding career helping people to feel their best? With a proud history spanning two decades, the Bachelor of Physiotherapy from Charles Sturt University has a reputation for producing highly sought-after graduates who have gone on to launch successful physiotherapy careers in Australia and overseas.

BACHELOR OF PHYSIOTHERAPY

In this degree, you will gain hands-on experience through extensive workplace learning, making you job-ready when you graduate. You'll work with clients of all ages from diverse backgrounds.

QUALITY FACILITIES

We work in partnership with communities to provide allied health education and research. Facilities designed to simulate clinical environments found in real workplaces include a musculoskeletal clinic, hospital ward, rehabilitation gym, movement laboratory, on-campus clinics, skills laboratories, and simulation facilities.

GRADUATE WITH HONOURS

If you achieve a grade point average of 5.0 or above across your first- and second-year subjects, you'll be eligible to apply for transfer to the Honours stream.

DEFERAL POLICY

You cannot defer commencement of this course.

COURSE INFORMATION

Click [here](#)

FIRST YEAR SUBJECTS

The following are the first-year subjects for the 2024 intake. They may change for the 2025 intake.

Semester 1

Introductory Functional Human Anatomy
Introduction to Australian Society and Health
Introduction to Physiotherapy Practice
Health and the Human Body: Cells, Immunity, and Musculoskeletal System

Semester 2

Health and the Human Body: Systemic Human Physiology
Foundations of Physiotherapy Practice
Indigenous Health
Functional anatomy of the vertebral column, pelvic girdle, and lower limbs.

CONNECTIONS - FIRST NATIONS DIRECT ENTRY PROGRAM

First Nations Australian applicants who complete the 5-day Connections program may be eligible to receive guaranteed entry into the Bachelor of Physiotherapy. The program is free, and travel, meals and accommodation costs will be subsidised. Click [here](#).

HOW TO APPLY

Step 1: apply direct to the University

If you have strong Year 11 results, apply direct to the university via the 'Charles Sturt Advantage (Early Offer)' program. Your application will be assessed based on your Year 11 grades and answers to a soft skills assessment. Applications open 1 May and close 31 August 2024. You will be notified in late September if you've received a firm or conditional offer for the Bachelor of Physiotherapy.

Step 2: via a Tertiary Admission Centre

Apply for the course via the Universities Admissions Centre ([UAC](#)) or the Victorian Tertiary Admissions Centre ([VTAC](#)). Note – applicants planning to apply for the [Schools Recommendation Scheme](#) must apply via UAC. Your application will be assessed on your Year 12 results. It's important to apply via VTAC or UAC in case you don't receive an offer via the Advantage program.

VTAC: applications open 29 July 2024.

UAC: applications open 3 April 2024 for NSW students and late July/early August 2024 for Victorian students.

Course	Recommended study	Campus
Bachelor of Physiotherapy	Biology	Albury-Wodonga

PATHWAY EXAMPLES

The following are pathway options if you haven't met the requirements for direct entry into the course. Note – entry into the Bachelor of Physiotherapy is very competitive. The pathway options below are the minimum requirements to be eligible, but it's expected that higher achievement will be required.

Via a VET pathway

STEP 1: VET course

Complete an AQF Certificate IV or higher qualification at a Registered Training Organisation such as a TAFE.

STEP 2: Bachelor of Physiotherapy

Apply for the Bachelor of Physiotherapy.

Via a higher education pathway

STEP 1: higher education subjects

Successfully complete at least two University level subjects (AQF level Associate Degree or higher) demonstrating a reasonable prospect of success through Grade Point Average (GPA) gained in these studies.

STEP 2: Bachelor of Physiotherapy

Apply for the Bachelor of Physiotherapy.

SELECTION RANK ADJUSTMENTS

At Charles Sturt, you may be eligible to receive up to 12 points of Adjustment Factors. The Factors are added to your combined study scores (VCE Aggregate) and your ATAR is recalculated. These adjustment factors may be awarded across one or more of the following categories:

- Regional Location Adjustment (maximum 5 points)
- Subject Performance (maximum 10 points)
- Educational Disadvantage (maximum 7 points)

Adjustment factors are calculated automatically for applicants who apply via UAC, VTAC or direct to Charles Sturt. Click [here](#) for information on selection ranks.

Regional Location Adjustment

Applicants who attend a regional high school will be awarded 5 adjustment points.

Subject performance

Applicants can receive up to 10 adjustment points for excellence in certain subjects.

Educational Disadvantage

Up to 7 adjustment points can be awarded for educational disadvantage.

Applicants applying via VTAC for the Albury-Wodonga campus can apply for adjustment factors via the [Special Entry Access Scheme](#). Applicants applying via UAC can apply via the [Educational Access Scheme](#).

Click [here](#).

EARLY ENTRY PROGRAMS

The following early entry programs provide a way to receive a firm or conditional offer for the Bachelor of Physiotherapy before you sit end of year exams.

Charles Sturt Advantage (Early Offer)

Applications open on 1 May and close on 31 August. Selection is based on Year 11 results and answers to a soft skills assessment. Successful applicants can receive a firm (ATAR free) or conditional offer (must meet a minimum ATAR).

Schools Recommendation Scheme

Applications open 3 April for NSW students and August for Victorian students, and close on 16 September 2024. Selection is based on Year 11 results and a school rating of your aptitudes. Successful applicants will receive a firm or a conditional offer via the UAC system. Click [here](#).

AUSTRALIAN CATHOLIC UNIVERSITY



The Bachelor of Physiotherapy is for those who want to prevent injury and disability in others as well as rehabilitate those already injured.

BACHELOR OF PHYSIOTHERAPY

You will learn how to identify, assess and treat a range of conditions. As a graduate, you will have developed skills to work with everyone from children to the elderly, as well as deal with gender-specific issues.

CLINICAL EXPERIENCE

You will undertake industry placements starting in your first year. Our Physiotherapy Practice units are designed to help you contextualise theoretical knowledge through clinical practice. Year 1: Observation days (approx 30 hrs) conducted over 2-3 days in Semester 2. Year 4: Students have 5 clinical placement blocks of 5 weeks duration (125 days) over the whole year.

OVERSEAS EXPERIENCE

Each year ACU's Faculty of Health Sciences offers a number of destinations around the world where you can undertake a community engagement unit or clinical placement/professional practice abroad as part of your studies. Currently the overseas clinical placements that are offered include: Chile, Denmark, Timor Leste, Vietnam, and Vanuatu.

FIRST YEAR SUBJECTS

The following are the first-year subjects for the 2024 intake. They may change for the 2025 intake.

Semester 1

Physiotherapy Anatomy 1
Human Biology 1
Psychology for Allied Health
Foundations for Physiotherapy Practice 1.

Semester 2

Physiotherapy Anatomy 2
Human Biology 2
Self and Community
Foundations of Physiotherapy Practice 2.

ABORIGINAL AND TORRES STRAIT ISLANDER PROGRAM

If you identify as Aboriginal and/or Torres Strait Islander through VTAC, you will be invited by ACU to take part in an interview. You may receive an offer based on your potential to succeed. Click [here](#).

PROFESSIONAL ACCREDITATION

Eligible graduates can apply for registration with the Australian Health Practitioner Regulation Agency (AHPRA). Graduates will also be eligible for membership of the [Australian Physiotherapy Association](#).

HONOURS PROGRAM

High-achieving Bachelor of Physiotherapy students can undertake honours in their third and fourth years, providing they meet admission requirements.

HOW TO APPLY

Apply via the [Victorian Tertiary Admissions Centre](#). Applications will open for Year 12 students on 29 July 2024.

COURSE INFORMATION

Click [here](#)

Course	Prerequisites	Campus
Bachelor of Physiotherapy	Units 3 and 4: minimum study score of 30 in English (EAL) or 25 in any other English, and 25 in at least one of Biology, Chemistry, or Physics.	Ballarat

Bridging programs are available for the science subjects.

PATHWAY EXAMPLES

The following are two pathway options if you haven't met the requirements for direct entry into the course. Note: application for the Bachelor of Physiotherapy is competitive and there is no guaranteed pathway into the degree.

Via an ACU enabling course

STEP 1: enabling program

Complete the 40-week Foundation Studies Program at the ACU Melbourne campus or online. Achieve a GPA of at least 6.7.

STEP 2: Bachelor of Physiotherapy

Apply for the 4-year Bachelor of Physiotherapy.

Via a higher education pathway

STEP 1: higher education subjects

Complete at least two units of [AQF](#)-recognised study at bachelor level or above. You'll be assigned a selection rank based on your study level, duration and grade point average that will be applied during the admission process. You'll need to meet the minimum entry requirements and subject prerequisites for the Bachelor of Physiotherapy. Note – applicants that have less than 12 months of a higher education study will be selected on their entire academic history (including ATAR). Applicants with 12 months or more of a higher education study will be considered on their GPA alone.

STEP 2: Bachelor of Physiotherapy

Apply for the 4-year Bachelor of Physiotherapy.

Via a VET pathway

STEP 1: Certificate III course

If you're a current Year 12 applicant you can be given a selection rank separate from, and in addition to, your ATAR if you've completed a competency-based and graded [AQF](#) Certificate III or above. You'll need to meet the minimum entry requirements and subject prerequisites for the Bachelor of Physiotherapy.

STEP 2: Bachelor of Physiotherapy

Apply for the 4-year Bachelor of Physiotherapy.

SELECTION RANK ADJUSTMENTS

If eligible, ACU will add adjustment factors to your VCE aggregate to recalculate your ATAR and boost your [selection rank](#) for entry into their courses. Adjustment factors are calculated from initiatives such as the following. Note - if you're eligible for multiple initiatives, the maximum aggregate adjustments you can be awarded is 12.

ACU Subject Program

Applicants can receive up to 5 adjustment factors for high achievement in eligible Units 3 and 4 subjects. In the 2024 intake, the eligible subjects were Biology, Chemistry, any English, Health And Human Development, Mathematical Methods, Specialist Mathematics, Physics, and Psychology. Eligible subjects for the 2025 intake will be advertised via [VTAC](#) from 29 July 2024.

Elite Athlete and Performers Program

Eligible applicants will receive up to 5 adjustment factors.

Schools Relationship Program, Campus Program, and Regional Schools Program

Eligible applicants will receive a maximum of 5 adjustment factors across these three access schemes.

Special Entry Access Scheme

Applicants can receive adjustment points for short or long-term disadvantage. Applicants can apply for this scheme via the Victorian Tertiary Admissions Centre (VTAC) between 29 July – 11 October 2024 after creating their VTAC account and adding course preferences.

Read about the above programs via this [link](#).

Youth Ministry

Applicants who studied Youth Ministry in Year 12 at school are eligible for 5 adjustments.

EARLY ENTRY PROGRAM

The [ACU Guarantee](#) is a program that uses an alternative selection rank for entry into most courses.

A selection rank is calculated from your Year 11 academic results and can be boosted by several factors such as completing up to three personal statements and living in a rural/regional area.

Successful applicants will receive a conditional offer for the Bachelor of Physiotherapy and will no longer require an ATAR or study scores for entry into the course.

To receive a formal offer, applicants will need to complete Year 12, meet course prerequisites, and preference the course in their VTAC account correctly.

Applications for the program will open on 22 July and will close on 16 September 2024.

EXAMPLE

Meet John

John wants to maximise his chances of getting an offer for the Bachelor of Physiotherapy so he does the following:

ACU Guarantee

He completes the application for the ACU Guarantee program in late July 2024 and uploads his Year 11 grades. He completes 2 personal statements to boost his selection rank.

Victorian Tertiary Admissions Centre (VTAC)

He formally applies for the Bachelor of Physiotherapy via VTAC and places the Bachelor of Exercise and Sports Science as a back-up course. Applications open 29 July 2024.

Special Education Access Scheme (SEAS)

He also completes an application for the Special Education Access Scheme via VTAC so he is eligible for equity adjustments towards his selection rank.

John receives an offer via the ACU Guarantee Program and no longer requires an ATAR for selection. He places the course first on his VTAC preference list and receives his formal offer via VTAC in December.



Movement is essential to our health, happiness and connection to others - and physios help us move better. Get ready to use exercise and movement to improve the lives of athletes, children, adults and people recovering from surgery, injury or illness.

UNDERGRADUATE ENTRY

Bachelor of Physiotherapy (Honours)

With La Trobe's Bachelor of Physiotherapy (Honours) you'll get a detailed understanding of the human body and develop the practical skills to launch your career in this rewarding and dynamic field of health. At La Trobe, not only will you learn from industry leaders and world-class researchers, you'll experience unique industry opportunities with our broad range of partners.

INDUSTRY EXPERIENCE

Undertake work placements in leading hospitals and private practices such as The Alfred, Northern Health, Royal Melbourne Hospital, Bendigo Health, Olympic Park Sports Medicine, or Back in Motion. International placements are available in countries such as Italy, Denmark, India, and Vietnam.

GRADUATE ENTRY

Master of Physiotherapy Practice

La Trobe also offers an accredited physiotherapy qualification at the graduate level. Below is the entry pathway:

Step 1

Successful completion of an Australian bachelor degree (or equivalent). Applicants must have completed their degree within the last five years. Specialisation - Compulsory: Tertiary-level subjects in musculoskeletal anatomy (2 units) and human physiology (1 unit). Achieve a Weighted Average Mark (WAM) of at least 70%. Read more about entry requirements [here](#).

Step 2

Apply for the 2-year Master of Physiotherapy Practice.

PROFESSIONAL ACCREDITATION

The Bachelor of Physiotherapy (Honours) and the Master of Physiotherapy Practice are both accredited by the Australian Physiotherapy Council. Graduates may be eligible to apply for registration with the Physiotherapy Board of Australia.

UNDERGRADUATE ENTRY

FIRST NATIONS AUSTRALIAN ENTRY

This is an alternative entry into the Bachelor of Physiotherapy (Honours) for applicants who are First Nations Australian. Choose the 'First Nation Australian' tagged course via VTAC.

HOW TO APPLY

Apply via the [Victorian Tertiary Admissions Centre](#). Applications will open for Year 12 students on 29 July 2024.

COURSE INFORMATION

Click [here](#).

Course	Prerequisites – Units 3 and 4	Campus
Bachelor of Physiotherapy (Honours)	A study score of at least 30 in English (EAL) or at least 25 in English other than EAL, and a study score of at least 25 in two of Biology, Chemistry, any Mathematics (General, Methods or Specialist), Physical Education or Physics. Note: bridging subjects are available.	Melbourne Bendigo
Bachelor of Physiotherapy (Honours) (First Nations Australian Entry)	As above.	Bendigo
Master of Physiotherapy Practice	Detailed information on selection criteria .	Melbourne

PATHWAYS

The following are examples of pathways into the Bachelor of Physiotherapy (Honours). Note: application for the Bachelor of Physiotherapy is competitive and there is no guaranteed pathway into the degree.

Via a La Trobe University Diploma course

STEP 1: Diploma in Health Sciences

Complete the 1-year Diploma at La Trobe University, Melbourne campus.

STEP 2: Bachelor of Physiotherapy (Honours)

Apply for the 4-year physiotherapy degree.

Via higher education studies

STEP 1: first year of a degree

Complete a minimum of 1.00 equivalent full time study load (EFTSL) in a degree award qualification at any university.

Demonstrate proficiency equivalent to stated Year 12 prerequisites (bridging subjects are available).

STEP 2: Bachelor of Physiotherapy (Honours)

Apply for the 4-year physiotherapy degree.

Via a La Trobe University bachelor degree

STEP 1: Bachelor degree

Complete at least the first year of one of the following 3-year degrees:

Health Science (Melbourne, Bendigo, Online)

Biomedicine (Melbourne)

Biomedical Science (Albury-Wodonga, Bendigo).

Bachelor of Exercise Science (Bendigo)

Bachelor of Sport and Exercise Science (Melbourne).

STEP 2: Bachelor of Physiotherapy (Honours)

Apply for the Bachelor of Physiotherapy (Honours). Achieve the required Weighted Average Mark (WAM) of at least 70%.

BOOST YOUR SELECTION RANK!

If eligible, La Trobe will add adjustment factors to your VCE aggregate to recalculate your ATAR and boost your [selection rank](#) for entry into their courses. For example, your ATAR might be 60 but after adjustment factors are added, your selection rank might be 72.5. Adjustment factors are calculated from initiatives such as the following.

Subject adjustments

Applicants can receive a maximum of 10 adjustments for high achievement in eligible Units 3 and 4 subjects. In the 2024 intake, the eligible subjects were: any Mathematics, Physical Education, any Science, Health And Human Development, and LOTE. Adjustments for the 2025 intake will be advertised via [VTAC](#) from 29 July 2024.

Priority Access Program

Adjustment factors are awarded to applicants who fall within any of the following categories: priority school (5), priority campus (5), regional school (5). The maximum adjustment factors physiotherapy applicants can receive overall and across all categories is 10.

Read about the program [here](#). Note – the Priority Access Program is undergoing a review for the 2025 intake.

Special Entry Access Scheme (SEAS)

Applicants can receive a maximum of 10 adjustment factors for disadvantage that has impacted their education. Applicants can apply for this scheme via the Victorian Tertiary Admissions Centre (VTAC) between 29 July – 11 October 2024 after creating their VTAC account and adding course preferences.

Elite Athlete ATAR Adjustment

Applicants can receive up to 5 aggregate adjustments. Click [here](#) for information.

Rural and Regional Student Access Scheme (RRSAS)

Students residing in an area classified as RA2 or higher are eligible for the following adjustments:

Regional students applying to courses at the Melbourne (Bundoora) campus will receive 5 aggregate points.

Regional students applying to courses at Bendigo, Albury Wodonga, Mildura and Shepparton will receive 10 aggregate points.

Click [here](#) for information.

GUARANTEED ATAR PROGRAMS

The following programs provide a guaranteed ATAR for The Bachelor of Physiotherapy (Honours). Note: the ATARs listed below are relevant for the 2024 intake and may change for the 2025 intake.

La Trobe Aspire Early Entry Program

Applications for the [Community Contribution](#) stream of the Aspire Early Entry program will open on 15 April and close on 6 September 2024. Selection is based on a statement about your community service, volunteering, or leadership. Successful applicants will unlock the following 'Aspire ATARs' for the Bachelor of Physiotherapy (Honours).

Bendigo: 90

Melbourne campus: 94

Regional Benefits Program

This [program](#) is for students who study at a regional school and is applicable to the physiotherapy degree at the Bendigo campus. The guaranteed ATAR is 85. You will be automatically considered for the program once you apply for the course via VTAC or UAC.

FIRST YEAR SUBJECTS

The following are the first-year subjects for the 2024 intake. They may change for the 2025 intake.

Semester 1

Human Biosciences A

Foundations of Professional Practice

Understanding Health and Wellbeing

Community Engagement and Professional Practice

Semester 2

Human Biosciences B

Research and Evidence in Practice

Principles of Activity and Exercise in Physiotherapy

Clinical Biomechanics of Movement.



The Bachelor of Physiotherapy is for those who want to prevent injury and disability in others as well as rehabilitate those already injured. With a focus on the physiotherapist-client relationship, this course is highly practical in its orientation and provides graduates job ready skills to have them highly employable on graduation from our accredited program.

BACHELOR OF PHYSIOTHERAPY

You will engage in hands on, practical sessions from your first year of study, and support your theoretical understanding of the human body through lectures, group sessions and online supported learning. You will gain knowledge and skills in a range of areas including anatomy, manual therapy, pharmacology, physiology, radiology, sociology, pathology & kinesiology.

CLINICAL EXPERIENCE

Throughout your degree, you will undertake extensive clinical placements of at least 1094 hours.

FIRST YEAR SUBJECTS

The following are the first-year subjects for the 2024 intake. They may change for the 2025 intake.

Semester 1

Introduction to Physiotherapy
Anatomy and Physiology for Physiotherapy 1
Communication Skills for Health Professionals
Foundations of Allied Health Practice

Semester 2

Lifespan Development for Health A
Health and Healthcare in Australia
Anatomy and Physiology for Physiotherapy 2
Introduction to Physiotherapy Application.

PROFESSIONAL ACCREDITATION

This program is accredited by the Australian Physiotherapy Council. Graduates will be eligible to apply for professional registration with the Physiotherapy Board of Australia through the Australian Health Practitioner Regulation Agency (AHPRA).

HOW TO APPLY

Apply via the [Victorian Tertiary Admissions Centre](#). Applications will open for Year 12 students on 29 July 2024.

COURSE INFORMATION

Click [here](#)

Course	Prerequisites	Campus
Bachelor of Physiotherapy	Units 3 and 4: a study score of at least 25 in any English. Units 1 to 4: satisfactory completion in one of Biology, Chemistry, Health And Human Development, Physical Education or Physics. Plus – submission of a supplementary form.	Gippsland - Churchill

FEDERATION UNIVERSITY

PATHWAY

The following is an example of a pathway into the Bachelor of Physiotherapy.

Via a higher-education pathway at Federation University

STEP 1: first year of a bachelor degree

Complete the first year of either of the following courses at Federation University with :

Bachelor of Exercise and Sport Science
Bachelor of Biomedical Science

STEP 2: Bachelor of Physiotherapy

Apply for the physiotherapy degree. You will be considered for entry into the degree based on your academic performance.

SELECTION RANK ADJUSTMENTS

If eligible, FedUni will add adjustment factors to your VCE aggregate to recalculate your ATAR and boost your [selection rank](#) for entry into their courses. For example, your ATAR might be 60 but after adjustment factors are added, your selection rank might be 68. Adjustment factors are calculated from initiatives such as the following.

Subject adjustments

Applicants can receive up to 5 adjustments for high achievement in eligible Units 3 and 4 subjects. In the 2024 intake, the eligible subjects were: Biology, Chemistry, and Physics. Eligible subjects for the 2025 intake will be advertised via [VTAC](#) from 29 July 2024.

Access and Equity Scheme

Applicants can apply for this scheme via the Special Entry Access Scheme (SEAS). Applicants apply for SEAS after creating their VTAC account and adding course preferences. Across the four SEAS categories Federation University will award a maximum adjustment of 15 aggregate points per applicant. Applications will open on 29 July and close on 11 October 2024.

The following are examples of adjustments and the maximum aggregate per category:

Category 1: Personal Information and Location

- Indigenous applicants: 15
- Living or school postcode: 10
- Under-represented school: 10
- First in family to attend uni: 5
- Non-English speaking background: 5

Category 2: Financial Disadvantage

- Up to 10 adjustments

Category 3: Disability or Medical Condition

- Up to 10 adjustments

Category 4: Difficult Circumstances

- Up to 10 adjustments.

GUARANTEED ATAR

The [guaranteed ATAR](#) for the Bachelor of Physiotherapy at FedUni is 90.

EARLY ENTRY PROGRAM

Applications for the [Early Offer](#) program are now open and will close on 1 December. Selection is based on an online application. Successful applicants will receive a conditional offer to the course.

To receive a formal offer, applicants will need to complete Year 12, meet course prerequisites, achieve an ATAR of at least 90, and preference the course in their VTAC account correctly.



Become a physiotherapist and use rehabilitation, injury prevention and exercise to improve people's quality of life, with the Bachelor of Applied Movement Science/Master of Physiotherapy from Victoria University.

DUAL DEGREE

Bachelor of Applied Movement Sciences / Master of Physiotherapy

Our 4.5-year dual degree will prepare you for real-world, contemporary physiotherapy practice. You will learn how to restore, maintain and enhance people's mobility, function and health – regardless of their age or physical ability.

Studying with expert physiotherapists and world-leading researchers, you'll develop targeted knowledge and clinical-reasoning skills. Throughout your study, you will learn to manage complex situations concerning individuals, families and communities.

You'll complete supervised professional practice (work-integrated learning) in a range of settings, including:

- elite sports
- private practice
- acute care and rehabilitation clinics
- aged care
- community care.

GRADUATE ENTRY

Master of Physiotherapy

Victoria University offers a physiotherapy qualification at the graduate level. Below is the entry pathway:

Step 1

Completion of an Australian bachelor degree with a minimum GPA of 4.5 out of 7.0 or a Weighted Average Mark (WAM) of 60 percent and with evidence of a minimum of two research intensive units or equivalent in the following disciplines:

- Bachelor of Biomedical and Exercise Science
- Bachelor of Exercise Science
- Bachelor of Biomedicine
- Bachelor of Physiotherapy

Step 2

Apply for the 2-year Master of Physiotherapy.

PROFESSIONAL ACCREDITATION

The Master of Physiotherapy is accredited by the Australian Physiotherapy Council. Successful graduates are eligible for membership of the Physiotherapy Board of Australia enabling them to practise in Australia.

UNDERGRADUATE ENTRY

VU MOONDANI BALLUK ABORIGINAL ADMISSION PROGRAM

Aboriginal and Torres Strait Islander students may be able to apply for physiotherapy via this [program](#). Fill out the application form [here](#) and Moondani Balluk staff will contact you with information

HOW TO APPLY

Apply via the [Victorian Tertiary Admissions Centre](#). Applications will open for Year 12 students on 29 July 2024.

COURSE INFORMATION

Click [here](#)

Course	Prerequisites – Units 3 and 4	Campus
Bachelor of Applied Movement Sciences / Master of Physiotherapy	Study score of at least 30 in English (EAL) or 25 in any other English; plus a study score of at least 25 in one of Biology, Chemistry, Physics, Mathematical Methods or Specialist Mathematics.	Footscray Park
Master of Speech Pathology	Entry requirements, click here .	Footscray Park

PATHWAYS

The following is an example of a pathway into the dual physiotherapy degree if you haven't met the requirements for direct entry into the course.

Via a VET Pathway

STEP 1: Diploma or Advanced Diploma

Complete a relevant Australian Advanced Diploma or Diploma (or equivalent) in health sciences.

STEP 2: physiotherapy degree

Apply for the Bachelor of Applied Movement Sciences / Master of Physiotherapy. Note: this isn't a guaranteed entry pathway.

Via a higher-education pathway

STEP 1: first year of a bachelor degree

Complete at least two semesters of an Australian Higher Education award (or equivalent) in health or medical sciences.

STEP 2: physiotherapy degree

Apply for the Bachelor of Applied Movement Sciences / Master of Physiotherapy. Note: this isn't a guaranteed entry pathway.

Via a higher-education pathway at Victoria University (second year entry)

STEP 1: first year of a bachelor degree

Complete at least two Higher Education semesters in one of the following courses at Victoria University:

Bachelor of Biomedical Science
Bachelor of Biomedical Science and Exercise Science.

STEP 2: physiotherapy degree

Apply for the Bachelor of Applied Movement Sciences / Master of Physiotherapy. If your WAM is competitive enough, you may be able to gain entry into the second year of the course.

SELECTION RANK ADJUSTMENTS

If eligible, Victoria University will add adjustment factors to your VCE aggregate to recalculate your ATAR and boost your [selection rank](#) for entry into their courses. Adjustment factors are calculated from initiatives such as the following. Note - if you're eligible for multiple initiatives, the maximum aggregate adjustments you can be awarded is 20.

Subject adjustments

Applicants can receive up to 20 adjustments for high achievement in eligible Units 3 and 4 subjects. In the 2024 intake, the eligible subjects were: English (EAL), Biology, Chemistry, English other than EAL, Mathematical Methods, Specialist Mathematics or Physics. Eligible subjects for the 2025 intake will be advertised via [VTAC](#) from 29 July 2024.

Special Entry Access Scheme (SEAS)

Applicants can receive adjustments for educational disadvantage via SEAS. Applications for the scheme are made via the Victorian Tertiary Admissions Centre (VTAC). Applicants apply for SEAS after creating their VTAC account and adding course preferences. Applications will open on 29 July and close on 11 October 2024.

Location adjustment

Applicants may receive adjustments based on their location or where they went to school. Apply via SEAS and tick yes for Category 1.

Elite Athlete ATAR Adjustment

Applicants can receive up to 5 aggregate adjustments. Click [here](#) for information.

EARLY ENTRY PROGRAM

Applications for the [VU Guaranteed](#) program will open later in the year. Selection is based on answers to four questions. Successful applicants will receive 5 aggregate adjustments towards their selection rank.

FIRST YEAR SUBJECTS

The following are the first-year subjects for the 2024 intake. They may change for the 2025 intake.

Semester 1

Introduction to the Health Profession (Physiotherapy)
Exercise and Sport Psychology
Human Physiology A
Functional Anatomy of the Trunk

Semester 2

Human Growth and Lifestyle Development
Introduction to Public Health and Wellness
Human Physiology B
Functional Anatomy of the Limbs.



A Bachelor of Physiotherapy (Honours) is a degree preparing you to qualify as a physiotherapist and treat a range of health conditions. Our course is taught by expert physiotherapists and provides you with the knowledge, skills and clinical experience needed to prepare for a rewarding career in physiotherapy.

UNDERGRADUATE ENTRY

Bachelor of Physiotherapy (Honours)

With our Bachelor of Physiotherapy (Honours), you'll think like a physiotherapist from the start of your degree. Our specialist program means you only study physiotherapy subjects.

With an integrated curriculum, each week you'll explore a new health condition and apply your knowledge through problem-based learning and practice relevant physiotherapy treatments. In the second half of your degree, you move into the clinical setting.

You'll have the opportunity to experience a range of physiotherapy careers in diverse practice settings, which could include hospitals, rehabilitation centres, private practices and sports medicine clinics.

GRADUATE ENTRY

Doctor of Physiotherapy

Monash also offers an accredited physiotherapy qualification at the graduate level. Below is the entry pathway:

Step 1

An Australian bachelor degree (or equivalent) in a relevant area of study with at least 70% distinction average. The Relevant area of study must include human anatomy AND human physiology AND biostatistics.

Step 2

Apply for the 3-year Doctor of Physiotherapy.

PROFESSIONAL ACCREDITATION

The Bachelor of Physiotherapy (Honours) and the Doctor of Physiotherapy are accredited by the Australian Physiotherapy Council. Successful graduates are eligible for membership of the Physiotherapy Board of Australia enabling them to practise in Australia.

HOW TO APPLY

Apply via the [Victorian Tertiary Admissions Centre](#). Applications will open for Year 12 students in August 2024 (TBC).

COURSE INFORMATION

Click [here](#)

Course	Prerequisites - Units 3 and 4	Campus
Bachelor of Physiotherapy (Honours)	Units 3 and 4: a study score of at least 35 in English as an Additional Language (EAL) or at least 30 in English other than EAL, plus a study score of at least 25 in two of: Biology, Chemistry, Mathematical Methods, Specialist Mathematics or Physics.	Peninsula
Doctor of Physiotherapy	Detailed information on selection criteria .	Peninsula

PATHWAYS

The following is an example of a pathway into the undergraduate entry physiotherapy therapy degree.

Via a higher education pathway

STEP 1: tertiary study

Complete at least one year of full-time study (48 credit points) of a recognised university degree with a minimum average mark of 70%.

STEP 2: Physiotherapy

Apply for the Bachelor of Physiotherapy Therapy. Applicants must have completed the VCE subject prerequisites or equivalent university units to be eligible. Admissions to this course is competitive and applicants may need to meet a higher requirement to be offered a place.

SELECTION RANK ADJUSTMENTS

If eligible, Monash will add adjustment factors to your VCE aggregate to recalculate your ATAR and boost your [selection rank](#) for entry into their courses. For example, your ATAR might be 60 but after adjustment factors are added, your selection rank might be 70. Adjustment factors are calculated from initiatives such as the following:

Elite Student Athlete and Performer Entry Scheme

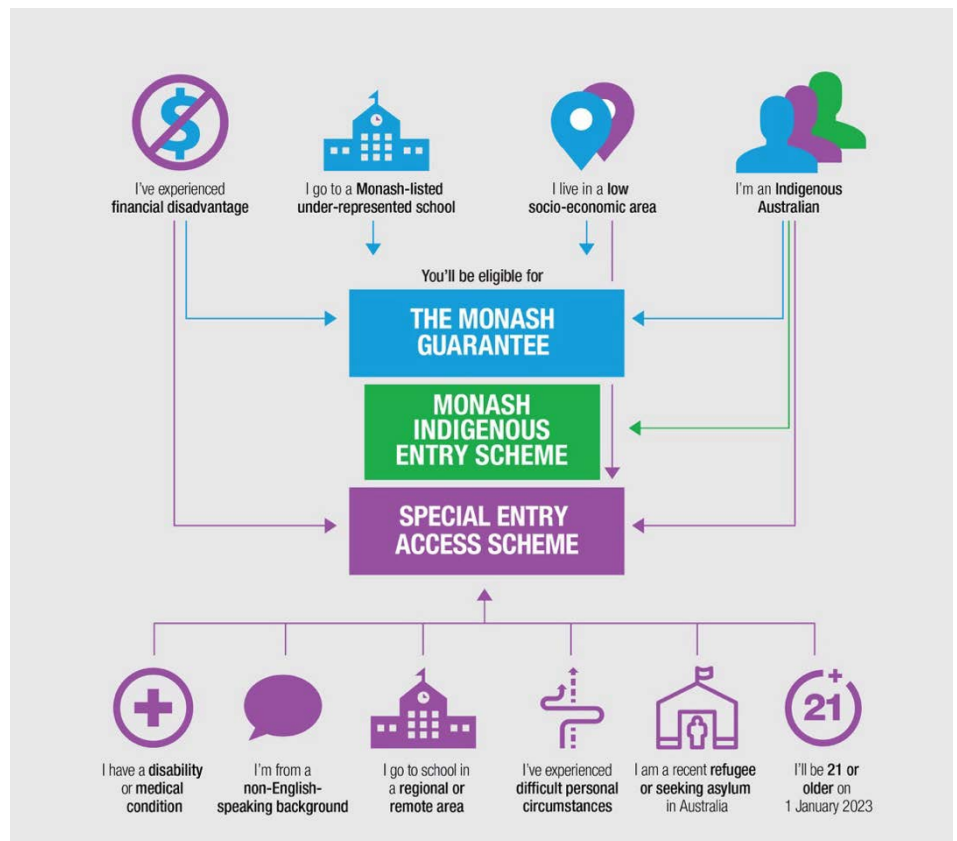
Applicants can receive up to 10 ATAR points. Click [here](#) for information.

Special Entry Access Scheme (SEAS)

Applicants can receive adjustment factors for disadvantage that has impacted their education. Applicants can apply for this scheme via the Victorian Tertiary Admissions Centre (VTAC) between 29 July – 11 October 2024 after creating their VTAC account and adding course preferences.

MONASH GUARANTEE

Applicants eligible for the [Monash Guarantee](#) program will be guaranteed entry into the Bachelor of Physiotherapy (Honours) with an ATAR of at least 93, providing they meet entry requirements and preference the course in their VTAC account correctly. Applicants apply for the scheme by ticking 'yes' to SEAS Category 1 – Personal Information and Location. Applications will open on 29 July 2024 via VTAC and close on 11 October 2024.



THE UNIVERSITY OF MELBOURNE



The Doctor of Physiotherapy draws on the University of Melbourne's reputation for excellence in teaching and research to inspire and enable students to become outstanding physiotherapists ready to excel as world-class leaders in their chosen field.

DOCTOR OF PHYSIOTHERAPY

Graduates will be work-ready and immediately employable following registration having gained diverse clinical experience in major hospitals and knowledge of primary healthcare and community engagement.

Led by highly credentialed and networked lecturers and mentors, as well as connections with leading hospitals, research institutes and the private sector, the Doctor of Physiotherapy is designed to meet the current and future needs of students, patients and the changing nature of the health workforce.

Graduates have the opportunity to pursue careers in a range of health settings including hospitals, private practice, sporting and rehabilitation facilities, community organisations, in public health advocacy or industry bodies.

CLINICAL EXPERIENCE

The course prepares students for the current needs and changing roles of the physiotherapist in areas such as chronic disease management, health promotion and prevention, as well as acute care, rehabilitation, and sports and private practice. The clinical program builds progressively to independent practice, with approximately 37 weeks of clinical practice.

GUARANTEED PATHWAYS

Graduate Degree Package

Year 12 students who achieve an ATAR of 98+ are eligible to apply for the Bachelor of Biomedicine/Doctor of Physiotherapy and the Bachelor of Science/Doctor of Physiotherapy.

Melbourne Chancellor's Scholarship

Year 12 students who achieve an ATAR of 99.90+ or 90 for an Indigenous student are eligible for guaranteed entry into the Doctor of Physiotherapy after completing an undergraduate degree at The University of Melbourne.

Read about the above programs [here](#).

STEPS TO STUDY THE DOCTOR OF PHYSIOTHERAPY

STEP 1:

First you will complete the Bachelor of Biomedicine or a Bachelor of Science at The University of Melbourne, or a different bachelor degree from any university. You will need to complete studies in physiology and anatomy to gain comprehensive knowledge of the human body.

STEP 2:

Following your undergraduate degree you will complete the three-year Doctor of Physiotherapy.

PROFESSIONAL ACCREDITATION

The course is accredited by the Physiotherapy Board of Australia. Graduates from the program are able to register with the Australian Health Practitioner Registration Authority (AHPRA) and work as a physiotherapist in Australia and New Zealand. Previous graduates have ventured around the world with their practice, including the UK, Canada, and the United States. Doctor of Physiotherapy graduates who wish to practice overseas should check with their local physiotherapy registration board to confirm registration requirements.

COURSE INFORMATION

Click [here](#).

Course	Prerequisites	Campus
Doctor of Physiotherapy	Selection criteria, click here .	Parkville

SWINBURNE UNIVERSITY OF TECHNOLOGY



MASTER OF PHYSIOTHERAPY

The Master of Physiotherapy is designed for students who wish to excel in their practice. Our course focuses on technology, digital health, leadership, enterprise and self-awareness. Students have access to mentors industry-wide who can help them develop and reflect on their work. Graduates will have the resilience, practical, and research skills for high-level leadership and management positions within the healthcare system.

PROFESSIONAL ACCREDITATION

The Master of Physiotherapy is an accredited and approved program by the Australian Physiotherapy Council and is endorsed by the Australian Physiotherapy Board.

COURSE INFORMATION

Click [here](#).

Course	Prerequisites	Campus
Master of Physiotherapy	Selection criteria, click here .	Hawthorn

STEPS TO STUDY THE MASTER OF PHYSIOTHERAPY

STEP 1:

Applicants must meet both of the following criteria:

- A completed bachelor degree in a health science related discipline with a GPA of at least 70% across their studies.
- Tertiary level studies in a minimum of 2 units of each of human anatomy and human physiology.

Health science disciplines include exercise science, exercise physiology, exercise and sports science, biomedical science, occupational therapy, nursing, osteopathy, chiropractic, paramedicine, physiotherapy.

They do not include health science or applied science degrees – unless anatomy and physiology prerequisites are met – or educational degrees (e.g. Bachelor of Physical Education).

STEP 2:

Apply for the 2-year Master of Physiotherapy.